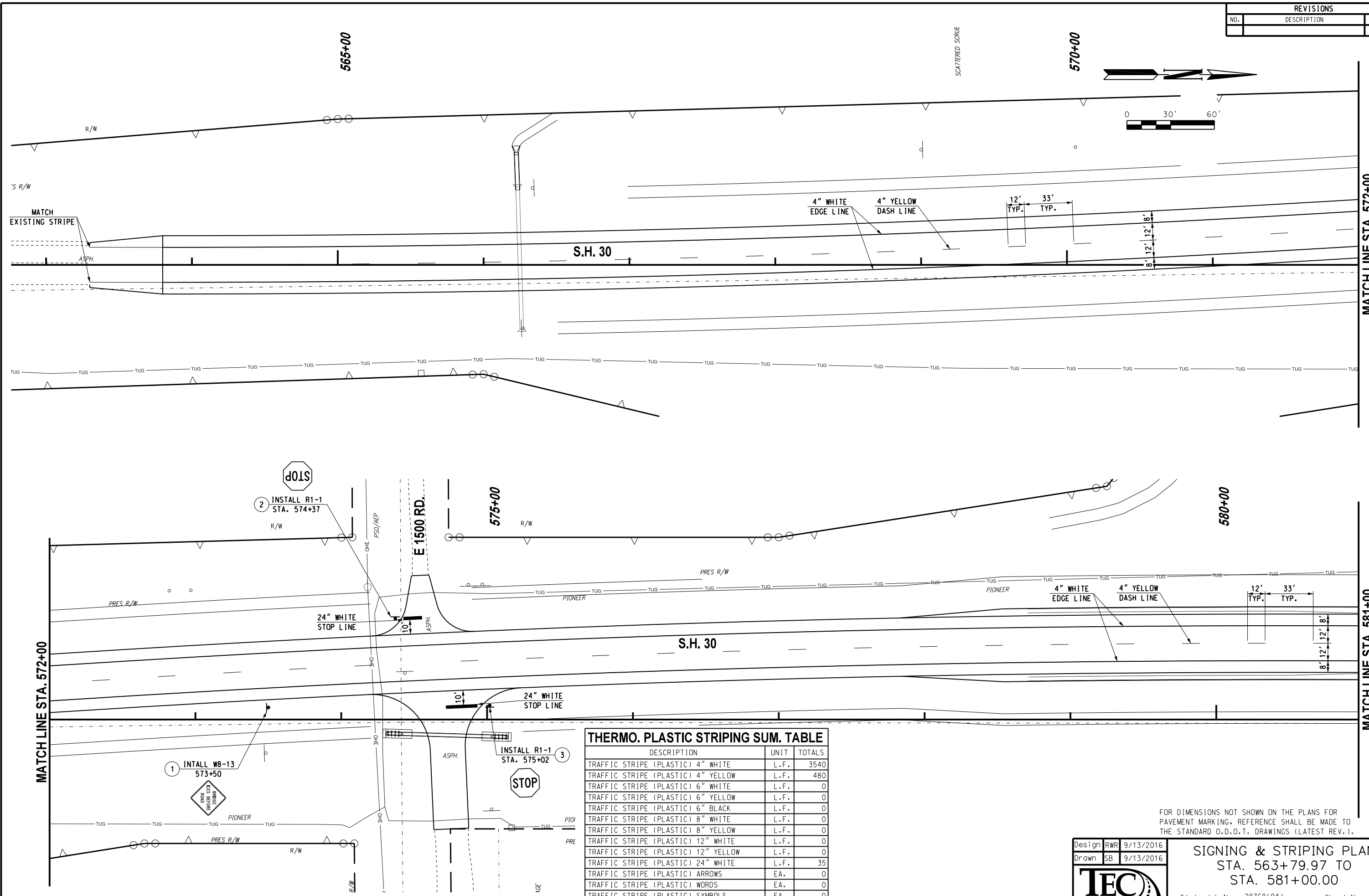


REVISIONS		
NO.	DESCRIPTION	DATE



**THERMO. PLASTIC STRIPING SUM. TABLE**

DESCRIPTION	UNIT	TOTALS
TRAFFIC STRIPE (PLASTIC) 4" WHITE	L.F.	3540
TRAFFIC STRIPE (PLASTIC) 4" YELLOW	L.F.	480
TRAFFIC STRIPE (PLASTIC) 6" WHITE	L.F.	0
TRAFFIC STRIPE (PLASTIC) 6" YELLOW	L.F.	0
TRAFFIC STRIPE (PLASTIC) 6" BLACK	L.F.	0
TRAFFIC STRIPE (PLASTIC) 8" WHITE	L.F.	0
TRAFFIC STRIPE (PLASTIC) 8" YELLOW	L.F.	0
TRAFFIC STRIPE (PLASTIC) 12" WHITE	L.F.	0
TRAFFIC STRIPE (PLASTIC) 12" YELLOW	L.F.	0
TRAFFIC STRIPE (PLASTIC) 24" WHITE	L.F.	35
TRAFFIC STRIPE (PLASTIC) ARROWS	EA.	0
TRAFFIC STRIPE (PLASTIC) WORDS	EA.	0
TRAFFIC STRIPE (PLASTIC) SYMBOLS	EA.	0

FOR DIMENSIONS NOT SHOWN ON THE PLANS FOR PAVEMENT MARKING, REFERENCE SHALL BE MADE TO THE STANDARD O.D.O.T. DRAWINGS (LATEST REV.).

Design	RWR	9/13/2016
Drawn	SB	9/13/2016



**SIGNING & STRIPING PLAN**  
 STA. 563+79.97 TO  
 STA. 581+00.00

State Job No. 28768(04) Sheet No. 60

9/13/2016 G:\Projects\17-2356 SH 30 over Sat Fork of Red River\CADD\STRIPING.dgn

S.H. 30 BRIDGE & APPROACHES HARMON COUNTY